

ASSEMBLY INSTRUCTIONS

elite

Visit: www.elite-furniture.co.uk

Helpline: 01405 746000



Before Assembly,
Please Read this Leaflet

Range: Reflex

Style: All

Instructions: Frame Assembly

User: 1 Person Assembly

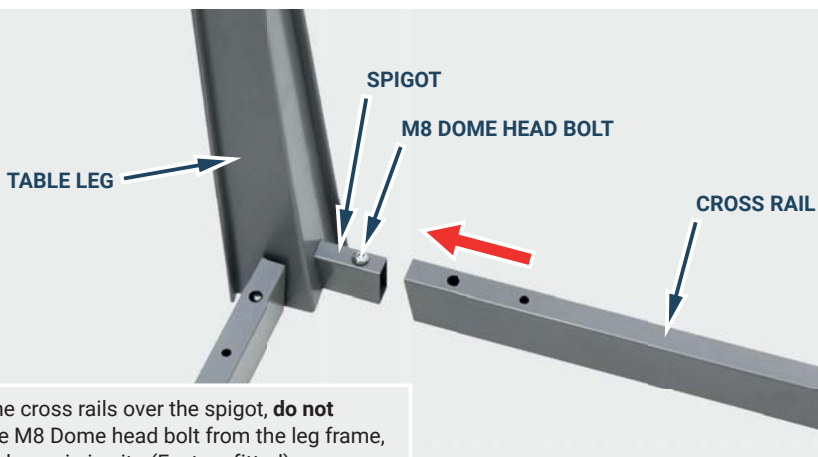


Tools Required:



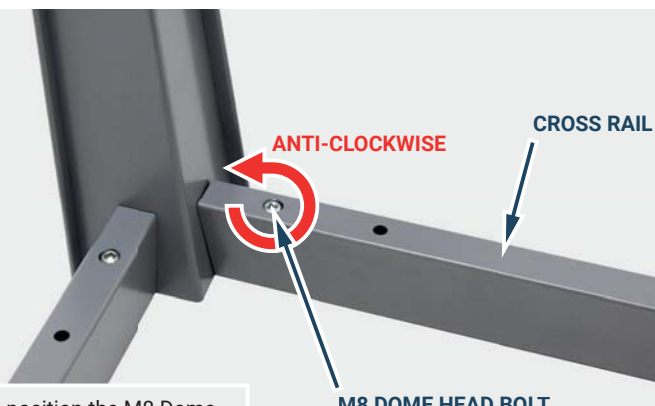
5mm Allen Key
or Hex' Screwdriver

1



Position the cross rails over the spigot, **do not remove** the M8 Dome head bolt from the leg frame, they should remain in situ (Factory fitted).

2



When both cross rails are in position the M8 Dome Head Bolts can be turned in an **anti-clockwise** direction until secure.